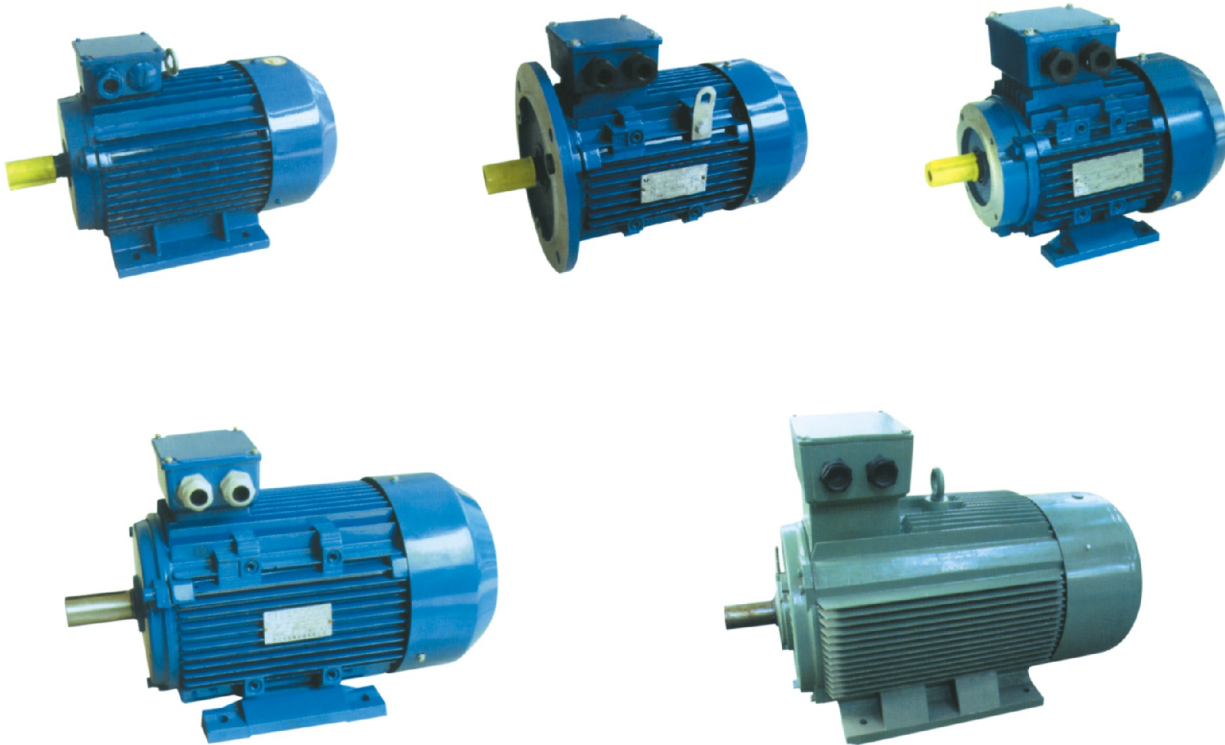


Y2 Series three-Phase asynchronous Motors



Å Ê Ö

General introduction

Y2 series three-phase asynchronous motors, developed with new techniques, are renewed and upgrading products based on Y series motors.

Y2 series motors are in obdurate design and fan cooled type, squirrel cage type and novel in design and nice in appearance, compact structure, lower noise, high efficiency, large torque, excellent starting performance, easy maintenance, etc.. This series motors adopt F class insulation and designed against the insulation system assessing method in accordance of international practice.

Y2 series motors can be widely applied to various of driving equipments such as machine tools, blowers, pumps, gearboxes, compressors, transporters, agricultural machines and so on.

Operating conditions

Ambient temperature: $15^{\circ}\text{C} \leq \theta \leq 40^{\circ}\text{C}$. Altitude: no higher than 1000 meters from sea level.

Rated voltage: 380V. Rated frequency: 50Hz,

Connection: Y connection is adopted for motors below 3KW (3KW included) and Δ connection is adopted for others above 4KW(4KW included). Working ration: continuous working system (S1).

F class Insulation, the temperature rising of the stator winding examined at 80K(by resistance method).

Protection grade: on the main body is IP54, on the terminal box can reach IP55. Cooling method: Ic411.

Y2 Series three-Phase asynchronous Motors

Bearing size

Frame Size	Poles	Drive End		Non-Drive End	
		Chinese type	International type	Chinese type	International type
63	2~4	180201	62012ZC3	180201	62012ZC3
71	2~6	180202	62022ZC3	180202	62022ZC3
80	2~8	180204	62042ZC3	180204	62042ZC3
90	2~8	180205	62052ZC3	180205	62052ZC3
100	2~8	180206	62062ZC3	180206	62062ZC3
112	2~8	180206	63062ZC3	180206	63062ZC3
132	2~8	180208	63082ZC3	180208	63082ZC3
160	2	180209	63092ZC3	180209	63092ZC3
	4~8	180309			
180	2	211	6311C3	211	6311C3
	4~8	311			
200	2	212	6312C3	212	6312C3
	4~8	312			
225	2	312	6313C3	312	6313C3
	4~8	313			
250	2	313	6314C3	314	6314C3
	4~8	314			
280	2	314	6314C3	314	6314C3
	4~8	317			
315	2	317	6317C3	317	6317C3
	4~10	2319			
355	2	319	6319C3	319	6319C3
	4~10	2322			

The mounting arrangements of the motors comply with IEC34-7 Recommendation. There are four basic arrangements shown as the following tables and figures.

Fundamental arrangement	B3					
Mounting arrangement	B3	B6	B7	B8	V5	V6
Diagram						
Range of Manufacture (framesize)	63-355	63-160				

Fundamental arrangement	B5			B35		
Mounting arrangement	B3	V1	V3	B35	V15	V36
Diagram						
Range of Manufacture (framesize)	63-280	63-355	63-160	63-355	63-160	

Fundamental arrangement	Small flange type		
Mounting arrangement	B14	B34	V18
Diagram			
Range of Manufacture (framesize)	63-112		

Y2 Series three-Phase asynchronous Motors

Main data for terminal box

Classified number	Frame size	Max.F.Amps	Entry hole size	
			Chinese standard	International standard
1	H63-80	2.6	1×M24×1.5	1×M20×1.5
2	H90-100	6.8	1×M24×1.5	1×M25×1.5
3	H112-132	15.4	2×M30×2	2×M32×1.5
4	H160-180	42.5	2×M36×2	2×M40×1.5
5	H200-225	84.2	2×M48×2	2×M50×1.5
6	H250-280	166.6	2×M64×2	2×M63×1.5
7	H315	358	2×M64×2	2×M63×1.5
8	H355	546	2×M72×2	2×M63×1.5

The fans are generally made of strengthen plastics other than that for frame sizes H315 up to H355 are made of aluminium-alloy or stamped with steel plate. All fan cowls are taken into shape by stretching with cold rolled steel plate to become high mechanical strength.

Technical data

Output KW	Type	Amps A	Speed r/min	Eff. %	P.F.	RT N.m	$\frac{LRT}{RLT}$	$\frac{BDT}{RLT}$	$\frac{LRA}{RLA}$	Noise dB(A)	Weight kg
380V 50HZ 2P											
0.18	Y2-631-2	0.5	2800	65.0	0.80	0.61	2.2	2.2	5.5	61	14
0.25	Y2-632-2	0.7	2800	68.0	0.81	0.96	2.2	2.2	5.5	61	14.5
0.37	Y2-711-2	1.0	2800	70.0	0.81	1.26	2.2	2.2	6.1	64	15
0.55	Y2-712-2	1.4	2800	73.0	0.82	1.88	2.2	2.3	6.1	64	15.5
0.75	Y2-801-2	1.8	2825	75.0	0.83	2.54	2.2	2.3	6.1	67	16.5
1.1	Y2-802-2	2.6	2825	77.0	0.84	3.72	2.2	2.3	7.0	67	17.5
1.5	Y2-90S-2	3.4	2840	79.0	0.84	5.04	2.2	2.3	7.0	72	21
2.2	Y2-90L-2	4.9	2840	81.0	0.85	7.40	2.2	2.3	7.0	72	25
3	Y2-100L-2	6.3	2880	83.0	0.87	9.95	2.2	2.3	7.5	76	33
4	Y2-112M-2	8.1	2890	85.0	0.88	13.22	2.2	2.3	7.5	77	41
5.5	Y2-132S1-2	11.0	2900	86.0	0.88	18.11	2.2	2.3	7.5	80	63
7.5	Y2-132S2-2	14.9	2900	87.0	0.88	24.70	2.2	2.3	7.5	80	70
11	Y2-160M1-2	21.3	2930	88.0	0.89	35.85	2.2	2.3	7.5	86	110
15	Y2-160M2-2	28.8	2930	89.0	0.89	48.89	2.2	2.3	7.5	86	120
18.5	Y2-160L-2	34.7	2930	90.0	0.90	60.30	2.2	2.3	7.5	86	135
22	Y2-180M-2	41.0	2940	90.5	0.90	71.46	2.0	2.3	7.5	89	165
30	Y2-200L1-2	55.5	2950	91.2	0.90	97.12	2.0	2.3	7.5	92	218
37	Y2-200L2-2	67.9	2950	92.0	0.90	119.78	2.0	2.3	7.5	92	230
45	Y2-225M-2	82.3	2970	92.3	0.90	144.70	2.0	2.3	7.5	92	280
55	Y2-250M-2	100.4	2970	92.5	0.90	176.85	2.0	2.3	7.5	93	365
75	Y2-280S-2	134.4	2970	93.2	0.91	241.16	2.0	2.3	7.5	94	495
90	Y2-280M-2	160.2	2970	93.8	0.91	289.39	2.0	2.3	7.5	94	565
110	Y2-315S-2	195.4	2980	94.0	0.91	352.51	1.8	2.2	7.1	96	890
132	Y2-315M-2	233.2	2980	94.5	0.91	423.02	1.8	2.2	7.1	96	980
160	Y2-315L1-2	279.3	2980	94.6	0.92	512.75	1.8	2.2	7.1	99	1055
200	Y2-315L2-2	348.4	2980	94.8	0.92	640.94	1.8	2.2	7.1	99	1110
250	Y2-355M-2	433.2	2985	95.3	0.92	799.83	1.6	2.2	7.1	103	1900
315	Y2-355L-2	544.2	2985	95.6	0.92	1007.79	1.6	2.2	7.1	103	2300

Y2 Series three-Phase asynchronous Motors

Technical date

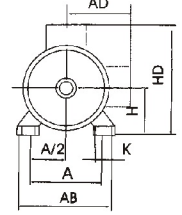
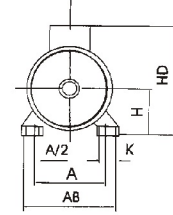
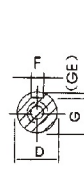
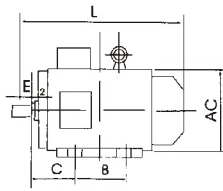
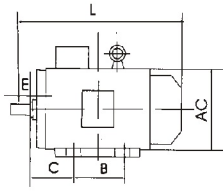
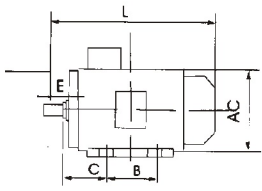
Output KW	Type	Amps A	Speed r/min	Eff. %	P.F.	RT N.m	$\frac{LRT}{RLT}$	$\frac{BDT}{RLT}$	$\frac{LRA}{RLA}$	Noise dB(A)	Weight kg
380V 50HZ 4P											
0.12	Y2-631-4	0.4	1400	57.0	0.72	0.82	2.1	2.2	4.4	52	13
0.18	Y2-632-4	0.6	1400	60.0	0.73	1.23	2.1	2.2	4.4	52	13.5
0.25	Y2-711-4	0.8	1400	65.0	0.74	1.71	2.1	2.2	5.2	55	14
0.37	Y2-712-4	1.1	1400	67.0	0.75	2.54	2.1	2.2	5.2	55	14.5
0.55	Y2-801-4	1.6	1390	71.0	0.75	3.78	2.4	2.3	5.2	58	15
0.75	Y2-802-4	2.0	1390	73.0	0.77	5.15	2.4	2.3	6.0	58	16
1.1	Y2-90S-4	2.0	1400	75.0	0.77	7.50	2.3	2.3	6.0	61	23
1.5	Y2-90L-4	3.7	1400	78.0	0.79	10.23	2.3	2.3	6.0	61	25
2.2	Y2-100L1-4	5.2	1420	80.0	0.81	14.80	2.3	2.3	7.0	64	33
3	Y2-100L2-4	6.8	1420	82.0	0.82	20.18	2.3	2.3	7.0	64	35
4	Y2-112M-4	8.8	1440	84.0	0.82	26.53	2.3	2.3	7.0	65	41
5.5	Y2-132S-4	11.8	1440	85.0	0.83	36.48	2.3	2.3	7.0	71	65
7.5	Y2-132M-S	15.6	1440	87.0	0.84	49.74	2.2	2.3	7.0	71	76
11	Y2-160M-4	22.3	1460	88.0	0.85	71.59	2.2	2.3	7.0	75	118
15	Y2-160L-4	30.1	1460	89.0	0.85	98.12	2.2	2.3	7.5	75	132
18.5	Y2-180M-4	36.5	1470	90.5	0.85	120.19	2.2	2.3	7.5	76	164
22	Y2-180L-4	43.2	170	91.0	0.85	142.93	2.2	2.3	7.5	76	182
30	Y2-200L-4	57.6	1480	92.0	0.83	193.68	2.2	2.3	7.2	79	245
37	Y2-225S-4	69.9	1480	92.5	0.87	238.87	2.2	2.3	7.2	81	258
45	Y2-225M-4	84.7	1480	92.8	0.87	290.37	2.2	2.3	7.2	81	290
55	Y2-250M-4	103.3	1480	93.0	0.87	354.90	2.2	2.3	7.2	86	388
75	Y2-280S-4	139.6	1480	93.8	0.87	483.95	2.2	2.3	7.2	86	510
90	Y2-280M-4	166.9	1485	94.2	0.87	578.79	2.2	2.3	7.2	86	606
110	Y2-315S-4	201.0	1485	94.5	0.88	707.41	2.1	2.2	6.9	96	910
132	Y2-315M-4	240.4	1485	94.8	0.88	848.89	2.1	2.2	6.9	96	1000
160	Y2-315L1-4	287.8	1485	94.9	0.89	1028.96	2.1	2.2	6.9	97	1055
200	Y2-315L2-4	359.4	1485	95.0	0.89	1286.20	2.1	2.2	6.9	97	1128
250	Y2-355M-4	442.9	1490	95.3	0.90	1602.35	2.1	2.2	6.9	101	1700
315	Y2-355L-4	556.2	1490	95.6	0.90	2018.96	2.1	2.2	6.9	101	1900
380V 50HZ 6P											
0.18	Y2-711-6	0.8	900	56.0	0.60	1.91	1.9	2.0	4.0	52	14
0.25	Y2-712-6	0.9	900	59.0	0.68	2.65	1.9	2.0	4.0	52	14.5
0.37	Y2-801-6	1.3	900	62.0	0.70	3.93	1.9	2.0	4.7	54	15
0.55	Y2-802-6	1.8	900	65.0	0.72	5.84	1.9	2.1	4.7	54	16
0.75	Y2-90S-6	2.3	910	69.0	0.72	7.87	2.0	2.1	5.5	57	19
1.1	Y2-90L-6	3.2	910	72.0	0.73	11.54	2.0	2.1	5.5	57	22
1.5	Y2-100L-6	3.9	940	76.0	0.76	15.24	2.0	2.1	5.5	61	32
2.2	Y2-112M-6	5.6	940	79.0	0.76	22.35	2.1	2.1	6.5	65	41
3	Y2-132S-6	7.4	960	81.0	0.76	29.84	2.1	2.1	6.5	69	63
4	Y2-132M1-6	9.9	960	82.0	0.76	39.79	2.1	2.1	6.5	69	72
5.5	Y2-132M-6	12.9	960	84.0	0.77	54.71	2.1	2.1	6.5	69	81
7.5	Y2-160M-6	16.9	970	86.0	0.78	73.84	2.0	2.1	6.5	73	118
11	Y2-160L-6	24.2	970	87.5	0.79	108.30	2.0	2.1	6.5	73	145
15	Y2-180L-6	31.6	970	89.0	0.81	147.68	2.1	2.1	7.0	73	178
18.5	Y2-200L1-6	38.6	970	90.0	0.81	182.14	2.1	2.1	7.0	76	200
22	Y2-200L2-6	44.7	970	90.0	0.83	216.60	2.1	2.1	7.0	76	228
30	Y2-225M-6	59.3	980	91.5	0.84	292.35	2.0	2.1	7.0	76	265
37	Y2-250M-6	71.1	980	92.0	0.86	360.56	2.1	2.1	7.0	78	370
45	Y2-280S-6	85.9	980	92.5	0.86	438.52	2.1	2.0	7.0	80	490
55	Y2-280M-6	104.7	980	92.8	0.86	535.97	2.1	2.0	7.0	80	540
75	Y2-315S-6	141.7	980	93.5	0.86	730.87	2.0	2.0	7.0	85	900
90	Y2-315M-6	169.5	985	93.8	0.86	872.59	2.0	2.0	7.0	85	980
110	Y2-315L1-6	206.7	985	94.0	0.86	1066.50	2.0	2.0	6.7	85	1045
132	Y2-315L2-6	244.7	985	94.2	0.87	1279.80	2.0	2.0	6.7	85	1100
160	Y2-355M1-6	292.3	990	94.5	0.88	1543.43	1.9	2.0	6.7	92	1440
200	Y2-355M2-6	364.6	990	94.7	0.88	1929.29	1.9	2.0	6.7	92	1600
250	Y2-355L-6	454.8	990	94.9	0.88	2411.62	1.9	2.0	6.7	92	1700

Y2 Series three-Phase asynchronous Motors

Technical data

Output KW	Type	Amps A	Speed r/min	Eff. %	P.F.	PT N.m	$\frac{LRT}{RLT}$	$\frac{BDT}{RLT}$	$\frac{LRA}{RLA}$	Noise dB(A)	Weight kg
380V 50HZ 8P											
0.18	Y2-801-8	0.9	690	51.0	0.61	2.49	1.8	1.9	3.3	52	22
0.25	Y2-802-8	1.2	690	54.0	0.61	3.46	1.8	1.9	3.3	52	24
0.37	Y2-90S-8	1.5	690	62.0	0.61	5.12	1.8	1.9	4.0	56	26
0.55	Y2-90L-8	2.2	690	63.0	0.61	7.61	1.8	2.0	4.0	56	28
0.75	Y2-100L1-8	2.4	700	71.0	0.67	10.23	1.8	2.0	4.0	59	30
1.1	Y2-100L2-8	3.3	700	73.0	0.69	15.00	1.8	2.0	5.0	59	32
1.5	Y2-112M-8	4.4	700	75.0	0.68	20.46	1.8	2.0	5.0	61	40
2.2	Y2-132S-8	6.0	710	78.0	0.71	29.59	1.8	2.0	6.0	64	64
3	Y2-132M-8	7.9	710	79.0	0.73	40.35	1.8	2.0	6.0	64	78
4	Y2-160M1-8	10.3	720	81.0	0.73	53.06	1.9	2.0	6.0	68	105
5.5	Y2-160M2-8	13.6	720	83.0	0.74	72.59	2.0	2.0	6.0	68	115
7.5	Y2-160L-8	17.8	720	85.5	0.75	99.50	2.0	2.0	6.0	68	145
11	Y2-180L-8	25.1	730	87.5	0.76	143.90	2.0	2.0	6.6	70	160
15	Y2-200L-8	34.1	730	88.0	0.76	196.23	2.0	2.0	6.6	73	228
18.5	Y2-225S-8	41.1	730	90.0	0.76	242.02	1.9	2.0	6.6	73	242
22	Y2-225M-8	47.5	730	90.5	0.78	287.81	1.9	2.0	6.6	73	265
30	Y2-250M-8	63.4	730	91.0	0.79	392.47	1.9	2.0	6.6	75	368
37	Y2-280S-8	77.8	730	91.5	0.79	484.04	1.9	2.0	6.6	75	472
45	Y2-280M-8	94.1	740	92.0	0.79	580.74	1.8	2.0	6.6	75	538
55	Y2-315S-8	111.2	740	92.8	0.81	709.80	1.8	2.0	6.6	82	900
75	Y2-315M-8	151.3	740	93.0	0.81	967.91	1.8	2.0	6.6	82	1000
90	Y2-315L1-8	177.8	740	93.8	0.82	1161.49	1.8	2.0	6.6	82	1055
110	Y2-315L2-8	216.8	745	94.0	0.82	1419.60	1.8	2.0	6.4	82	1118
132	Y2-355M1-8	261.0	745	93.7	0.82	1692.08	1.8	2.0	6.4	90	2000
160	Y2-355M2-8	314.7	745	94.2	0.82	2051.00	1.8	2.0	6.4	90	2150
200	Y2-355L-8	387.4	745	94.5	0.83	2563.38	1.8	2.0	6.4	90	2250
380V 50HZ 10P											
45	Y2-315S-10	99.6	590	91.5	0.75	728.39	1.5	2.0	6.2	82	818
55	Y2-315M-10	121.1	590	92.0	0.75	890.25	1.5	2.0	6.2	82	928
75	Y2-315L1-10	162.1	590	92.5	0.76	1213.98	1.5	2.0	6.2	82	1080
90	Y2-315L2-10	191.0	590	93.0	0.77	1456.78	1.5	2.0	6.2	82	1200
110	Y2-355M1-10	229.9	595	93.2	0.78	1765.55	1.3	2.0	6.0	90	1800
132	Y2-355M2-10	275.0	595	93.5	0.78	2118.66	1.3	2.0	6.0	90	2000
160	Y2-355L-10	333.3	595	93.5	0.78	2568.07	1.3	2.0	6.0	90	2500

Y2 Series three-Phase asynchronous Motors



H63-90

H100-132

H160-355

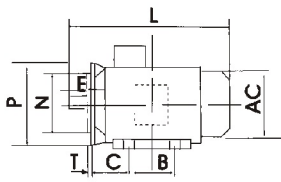
H63-71

H80-355

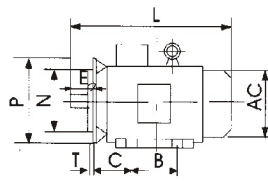
Frame with feet and andshield without fange

Frame Size	Poles	Mounting dimensions										Overall dimensions					
		A	A/2	B	C	D	E	F	G	H	K	AB	AC	AD	HD	L	DH
63	2, 4	100	50	80	40	11	23	4	8.5	63	7	135	130	70	180	230	M4×12
71	2, 4, 6	112	56	90	45	14	30	5	11	71	7	150	145	80	195	255	M5×12
80	2, 4, 6, 8	125	62.5	100	50	19	40	6	15.5	80	10	165	175	145	220	295	M6×16
90S	2, 4, 6, 8	140	70	100	56	24	50	8	20	90	10	180	195	155	250	320	M8×19
90L	2, 4, 6, 8	140	70	125	56	24	50	8	20	90	10	180	195	155	250	345	M8×19
100L	2, 4, 6, 8	160	80	140	63	28	60	8	24	100	12	205	215	180	270	385	M10×22
112M	2, 4, 6, 8	190	95	140	70	28	60	8	24	112	12	230	240	190	300	400	M10×22
132S	2, 4, 6, 8	216	108	140	89	38	80	10	33	132	12	270	275	210	345	470	M12×28
132M	2, 4, 6, 8	216	108	178	89	38	80	10	33	132	12	270	275	210	345	510	M12×28
160M	2, 4, 6, 8	254	127	210	108	42	110	12	37	160	15	320	330	255	420	615	M16×36
160L	2, 4, 6, 8	254	127	254	108	42	110	12	37	160	15	320	330	255	420	670	M16×36
180M	2, 4, 6, 8	279	139.5	241	121	48	110	14	42.5	180	15	355	380	280	455	700	M16×36
180L	2, 4, 6, 8	279	139.5	279	121	48	110	14	42.5	180	15	355	380	280	455	740	M16×36
200L	2, 4, 6, 8	318	159	305	133	55	110	16	49	200	15	395	420	305	505	770	M20×42
225S	4, 8	356	178	286	149	60	140	18	53	225	19	435	470	335	560	815	M20×42
225M	2	356	178	311	149	55	110	16	49	225	19	435	470	335	560	820	M20×42
	4, 6, 8	356	178	311	149	60	140	18	53	225	19	435	470	335	560	845	M20×42
250M	2	406	203	349	168	60	140	18	53	250	19	490	510	370	615	910	M20×42
	4, 6, 8	406	203	349	168	65	140	18	58	250	24	490	510	370	615	910	M20×42
280S	2	457	228.5	368	190	65	140	18	58	280	24	550	580	410	680	985	M20×42
	4, 6, 8	457	228.5	368	190	75	140	20	67.5	280	24	550	580	410	680	985	M20×42
280M	2	457	228.5	149	190	65	140	18	58	280	24	550	580	410	680	1035	M20×42
	4, 6, 8	457	228.5	149	190	75	140	20	67.5	280	24	550	580	410	680	1035	M20×42
315S	2	508	254	406	216	65	140	18	58	315	24	635	645	530	845	1160	M20×42
	4, 6, 8, 10	508	254	406	216	80	170	22	71	315	28	635	645	530	845	1270	M20×42
315M	2	508	254	457	216	65	140	18	58	315	28	635	645	530	845	1190	M20×42
	4, 6, 8, 10	508	254	457	216	80	170	22	71	315	28	635	645	530	845	1300	M20×42
315L	2	508	254	508	216	65	140	18	58	315	28	635	645	530	845	1190	M20×42
	4, 6, 8, 10	508	254	508	216	80	170	22	71	315	28	635	645	530	845	1300	M20×42
355M	2	610	305	560	254	75	140	20	67.5	355	28	730	710	655	1010	1500	M20×42
	4, 6, 8, 10	610	305	560	254	95	170	25	86	355	28	730	710	655	1010	1530	M20×42
	2	610	305	630	254	75	140	20	67.5	355	28	730	710	655	1010	1500	M20×42
355L	4, 6, 8, 10	610	305	630	254	95	170	25	86	355	28	730	710	655	1010	1530	M20×42

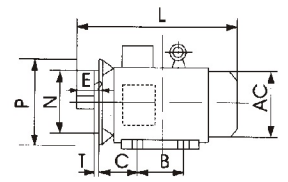
Y2 Series three-Phase asynchronous Motors



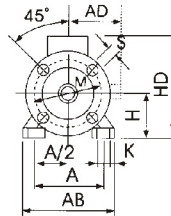
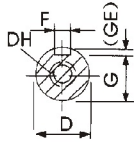
H63-90



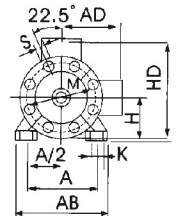
H100-132



H160-355



H63-200

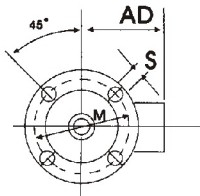


H225-355

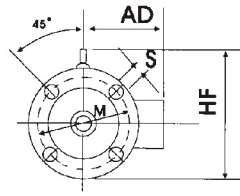
Frame with feet and endshield with flange

Frame size	Flange NO.	Poles	Mounting dimensions															Overall dimensions							
			A	A/2	B	C	D	E	F	G	H	K	M	N	P	R*	S	T	Flange holes	AB	AC	AD	HD	L	DH
63	FF115	2, 4	100	50	80	40	11	23	4	8.5	63	7	115	95	140	0	10	3	4	135	130	70	180	230	M4×12
71	FF130	2, 4, 6	112	56	90	45	14	30	5	11	71	7	130	110	160	0	10	3.5	4	150	145	80	195	255	M5×12
80	FF165	2, 4, 6, 8	125	62.5	100	50	19	40	6	15.5	80	10	165	130	200	0	12	3.5	4	165	175	145	220	295	M6×16
90S	FF165	2, 4, 6, 8	140	70	100	56	24	50	8	20	90	10	165	130	200	0	12	3.5	4	180	195	155	250	320	M8×19
90L	FF165	2, 4, 6, 8	140	70	125	56	24	50	8	20	90	10	165	130	200	0	12	3.5	4	180	195	155	250	345	M8×19
100L	FF215	2, 4, 6, 8	160	80	140	63	28	60	8	24	100	12	215	180	250	0	15	4	4	205	215	180	270	385	M10×22
112M	FF215	2, 4, 6, 8	190	95	140	70	28	60	8	24	112	12	215	180	250	0	15	4	4	230	240	190	300	400	M10×22
132S	FF265	2, 4, 6, 8	216	108	140	89	38	80	10	33	132	12	265	230	300	0	15	4	4	270	275	210	345	470	M12×28
132M	FF265	2, 4, 6, 8	216	108	178	89	38	80	10	33	132	12	265	230	300	0	15	4	4	270	275	210	345	510	M12×28
160M	FF300	2, 4, 6, 8	254	127	210	108	42	110	12	37	160	15	300	250	350	0	19	5	4	320	330	255	420	615	M16×36
160L	FF300	2, 4, 6, 8	254	127	254	108	42	110	12	37	160	15	300	250	350	0	19	5	4	320	330	255	420	670	M16×36
180M	FF300	2, 4, 6, 8	279	139.5	241	121	48	110	14	42.5	180	15	300	250	350	0	19	5	4	355	380	280	455	700	M16×36
180L	FF300	2, 4, 6, 8	279	139.5	279	121	48	110	14	42.5	180	15	300	250	350	0	19	5	4	355	380	280	455	740	M16×36
200L	FF350	2, 4, 6, 8	318	159	305	133	55	110	16	49	200	19	350	300	400	0	19	5	4	395	420	305	505	770	M20×42
225S	FF400	4, 8	356	178	286	149	60	140	18	53	225	19	400	350	450	0	19	5	8	435	470	335	560	815	M20×42
225M	FF400	2	356	178	311	149	55	110	16	49	225	19	400	350	450	0	19	5	8	435	470	335	560	820	M20×42
	FF400	4, 6, 8	356	178	311	149	60	140	18	53	225	19	400	350	450	0	19	5	8	435	470	335	560	845	M20×42
250M	FF500	2	406	203	349	168	60	140	18	53	250	24	500	450	550	0	19	5	8	490	510	370	615	910	M20×42
	FF500	4, 6, 8	406	203	349	168	65	140	18	58	250	24	500	450	550	0	19	5	8	490	510	370	615	910	M20×42
280S	FF500	2	457	228.5	368	190	65	140	18	58	280	24	500	450	550	0	19	5	8	550	580	410	680	985	M20×42
	FF500	4, 6, 8	457	228.5	368	190	75	140	20	67.5	280	24	500	450	550	0	19	5	8	550	580	410	680	985	M20×42
280M	FF500	2	457	228.5	419	190	65	140	18	58	280	24	500	450	550	0	19	5	8	550	580	410	680	1035	M20×42
	FF500	4, 6, 8	457	228.5	419	190	75	140	20	67.5	280	24	500	450	550	0	19	5	8	550	580	410	680	1035	M20×42
315S	FF600	2	508	254	406	216	65	140	18	58	315	28	600	550	660	0	24	6	8	635	645	530	845	1160	M20×42
	FF600	4, 6, 8, 10	508	254	406	216	80	170	22	71	315	28	600	550	660	0	24	6	8	635	645	530	845	1270	M20×42
315M	FF600	2	508	254	457	216	65	140	18	58	315	28	600	550	660	0	24	6	8	635	645	530	845	1190	M20×42
	FF600	4, 6, 8, 10	508	254	457	216	80	170	22	71	315	28	600	550	660	0	24	6	8	635	645	530	845	1300	M20×42
315L	FF600	2	508	254	508	216	65	140	18	58	315	28	600	550	660	0	24	6	8	635	645	530	845	1190	M20×42
	FF600	4, 6, 8, 10	508	254	508	216	80	170	22	71	315	28	600	550	660	0	24	6	8	635	645	530	845	1300	M20×42
355M	FF740	2	610	305	560	254	75	140	20	67.5	355	28	740	680	800	0	24	6	8	730	710	655	1010	1500	M20×42
	FF740	4, 6, 8, 10	610	305	560	254	95	170	25	86	355	28	740	680	800	0	24	6	8	730	710	655	1010	1530	M20×42
355L	FF740	2	610	305	630	254	75	140	20	67.5	355	28	740	680	800	0	24	6	8	730	710	655	1010	1500	M20×42
	FF740	4, 6, 8, 10	610	305	630	254	95	170	25	86	355	28	740	680	800	0	24	6	8	730	710	655	1010	1530	M20×42

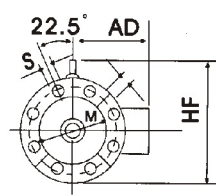
Y2 Series three-Phase asynchronous Motors



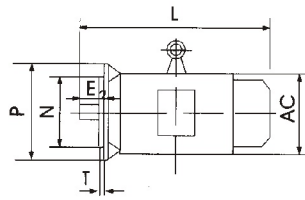
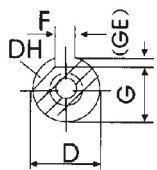
H63-90



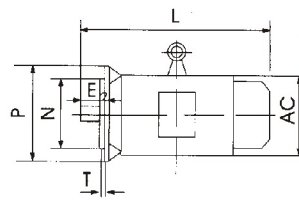
H100-200



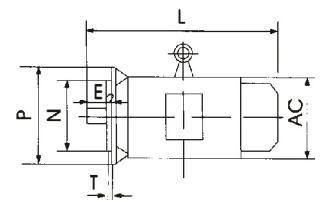
H225-280



H63-90



H100-132

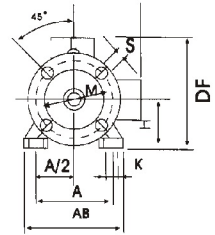
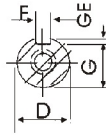
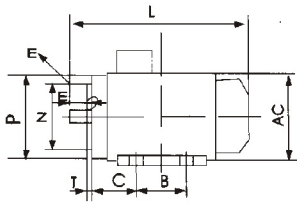


H255-280

Frame without feet and endshield with flange

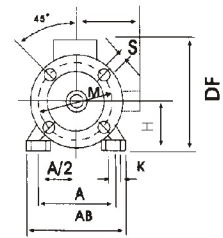
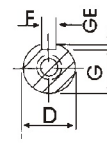
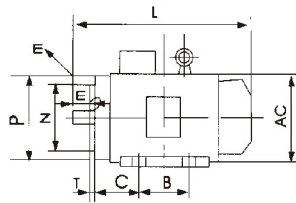
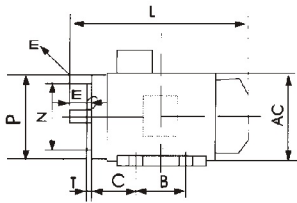
Frame size	Flange NO.	Poles	Mounting dimensions										Overall dimensions					
			D	E	F	G	M	N	P	R *	S	T	Flange holes	AC	AD	HF	L	DH
63	FF115	2, 4	11	23	4	8.5	115	95	140	0	10	3	4	130	70	130	230	M4×12
71	FF130	2, 4, 6	14	30	5	11	130	110	160	0	10	3.5	4	145	80	145	255	M5×12
80	FF165	2, 4, 6, 8	19	40	6	15.5	165	130	200	0	12	3.5	4	175	145	185	295	M6×16
90S	FF165	2, 4, 6, 8	24	50	8	20	165	130	200	0	12	3.5	4	195	155	195	320	M8×19
90L	FF165	2, 4, 6, 8	24	50	8	20	165	130	200	0	12	3.5	4	195	155	195	345	M8×19
100L	FF215	2, 4, 6, 8	28	60	8	24	215	180	250	0	15	4	4	215	180	245	385	M10×22
112M	FF215	2, 4, 6, 8	28	60	8	24	215	180	250	0	15	4	4	240	190	265	400	M10×22
132S	FF265	2, 4, 6, 8	38	80	10	33	265	230	300	0	15	4	4	275	210	315	470	M12×28
132M	FF265	2, 4, 6, 8	38	80	10	33	265	230	300	0	15	4	4	275	210	315	510	M12×28
160M	FF300	2, 4, 6, 8	42	110	12	37	300	250	350	0	19	5	4	330	255	385	615	M16×36
160L	FF300	2, 4, 6, 8	42	110	12	37	300	250	350	0	19	5	4	330	255	385	670	M16×36
180M	FF300	2, 4, 6, 8	48	110	14	42.5	300	250	350	0	19	5	4	380	280	430	700	M16×36
180L	FF300	2, 4, 6, 8	48	110	14	42.5	300	250	350	0	19	5	4	380	280	430	740	M16×36
200L	FF350	2, 4, 6, 8	55	110	16	49	350	300	400	0	19	5	4	420	305	480	770	M20×42
225S	FF400	4, 8	60	140	18	53	400	350	450	0	19	5	8	470	335	535	815	M20×42
225M	FF400	2	55	110	16	49	400	350	450	0	19	5	8	470	335	535	820	M20×42
	FF400	4, 6, 8	60	140	18	53	400	350	450	0	19	5	8	470	335	535	845	M20×42
250M	FF500	2	60	140	18	53	500	450	550	0	19	5	8	510	370	595	910	M20×42
	FF500	4, 6, 8	65	140	18	58	500	450	550	0	19	5	8	510	370	595	910	M20×42
280S	FF500	2	65	140	18	58	500	450	550	0	19	5	8	580	410	650	985	M20×42
	FF500	4, 6, 8	75	140	20	67.5	500	450	550	0	19	5	8	580	410	650	985	M20×42
280M	FF500	2	65	140	18	58	500	450	550	0	19	5	8	580	410	650	1035	M20×42
	Ff500	4, 6, 8	75	140	20	67.5	500	450	550	0	19	5	8	580	410	650	1035	M20×42

Y2 Series three-Phase asynchronous Motors



H63-71

H63-71



H80-90

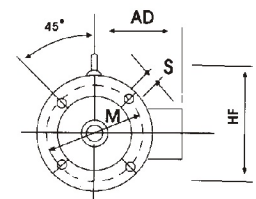
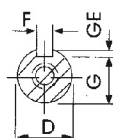
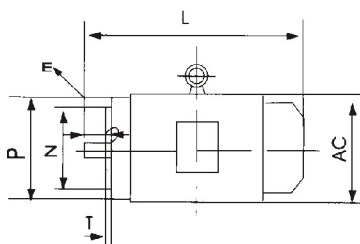
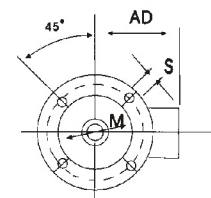
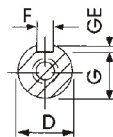
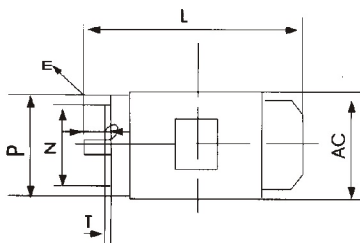
H100-112

H80-112

Frame with feet and end-shield with flange

Frame size	Flange NO.	Poles	Mounting dimensions																	Overall dimensions				
			A	A/2	B	C	D	E	F	G	H	K	M	N	P	R*	S	T	Flange holes	AB	AC	AD	HD	L
63	FT75	2, 4	110	50	80	40	11	23	4	8.5	63	7	75	60	90	0	M5	2.5	4	135	130	70	180	230
71	FT85	2, 4, 6	112	56	90	45	14	30	5	11	71	7	85	70	105	0	M6	2.5	4	150	155	80	195	255
80	FT100	2, 4, 6, 8	125	62.5	100	50	19	40	6	15.5	80	10	100	80	120	0	M6	3.0	4	165	165	145	214	295
90S	FT115	2, 4, 6, 8	140	70	100	56	24	50	8	20	90	10	115	95	140	0	M8	3.0	4	180	195	55	250	320
90L	FT115	2, 4, 6, 8	140	70	125	56	24	50	8	20	90	10	115	95	140	0	M8	3.0	4	180	195	155	250	345
100L	FT130	2, 4, 6, 8	160	80	140	63	28	60	8	24	100	12	130	110	160	0	M8	3.5	4	205	215	180	270	385
112M	FT130	2, 4, 6, 8	190	95	140	70	28	60	8	24	112	12	130	110	160	0	M8	3.5	4	230	240	190	300	400

R is the distance from the flange mounting-plane to the shaft-extension shoulder



H63-90

H100-112

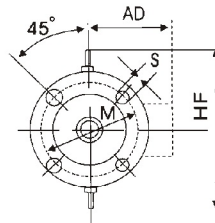
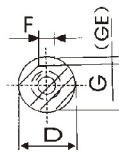
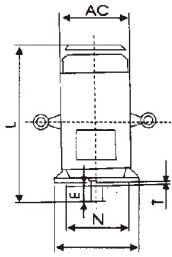
H63-90

H100-112

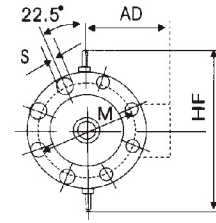
Y2 Series three-Phase asynchronous Motors

Frame with feet and end-shield with flange

Frame size	Flange NO.	Poles	Mounting dimensions										Overall dimensions				
			D	E	F	G	M	N	P	R *	S	T	Flange holes	AC	AD	HF	L
63	FT75	2, 4	11	23	4	8.5	75	60	90	0	M5	2.5	4	130	70	130	230
71	FT85	2, 4, 6	14	30	5	11	85	70	105	0	M6	2.5	4	145	80	145	255
80	FT100	2, 4, 6, 8	19	40	6	15.5	100	80	120	0	M6	3.0	4	175	145	185	295
90S	FT115	2, 4, 6, 8	24	50	8	20	115	95	140	0	M8	3.0	4	195	155	195	320
90L	FT115	2, 4, 6, 8	24	50	8	20	115	95	140	0	M8	3.0	4	195	155	195	345
100L	FT130	2, 4, 6, 8	28	60	8	24	130	110	160	0	M8	3.5	4	215	180	245	385
112M	FT130	2, 4, 6, 8	28	60	8	24	130	110	160	0	M8	3.5	4	240	190	265	400



H180-200



H225-355

Frame type, frame without feet and end shield with flange (with plain holes)

Frame size	Flange NO.	Poles	Mounting dimensions										Overall dimensions				
			D	E	F	G	M	N	P	R *	S	T	Flange holes	AC	AD	HF	L
180M	FF300	2, 4, 6, 8	48	110	14	42.5	300	250	350	0	19	5	4	380	280	500	760
180L	FF300	2, 4, 6, 8	48	110	14	42.5	300	250	350	0	19	5	4	380	280	500	800
200L	FF350	2, 4, 6, 8	55	110	16	49	350	300	400	0	19	5	4	420	305	550	840
225S	FF400	4, 8	60	140	18	53	400	350	450	0	19	5	8	470	335	610	905
225M	FF400	2	55	110	16	49	400	350	450	0	19	5	8	470	335	610	910
	FF400	4, 6, 8	60	140	18	53	400	350	450	0	19	5	8	470	335	610	935
250M	FF500	2	60	140	18	53	500	450	550	0	19	5	8	510	370	650	1015
	FF500	4, 6, 8	65	140	18	58	500	450	550	0	19	5	8	510	370	650	1015
280S	FF500	2,	65	140	18	58	500	450	550	0	19	5	8	580	410	720	1110
	FF500	4, 6, 8	75	140	20	67.5	500	450	550	0	19	5	8	580	410	720	1110
280M	FF500	2,	65	140	18	58	500	450	550	0	19	5	8	580	410	720	1150
	FF500	4, 6, 8	75	140	20	67.5	500	450	550	0	19	5	8	280	410	900	1150
315S	FF600	2,	65	140	18	58	600	550	660	0	24	6	8	645	530	900	1280
	FF600	4, 6, 8, 10	80	170	22	71	600	550	660	0	24	6	8	645	530	900	1510
315M	FF600	2,	65	140	18	58	600	550	660	0	24	6	8	645	530	900	1310
	FF600	4, 6, 8, 10	80	170	22	71	600	550	660	0	24	6	8	645	530	900	1430
315L	FF600	2,	65	140	18	58	600	550	660	0	24	6	8	645	530	900	1310
	FF600	4, 6, 8, 10	80	170	22	71	600	550	660	0	24	6	8	645	530	900	1430
355M	FF740	2,	75	140	20	67.5	740	680	800	0	24	6	8	710	655	1010	1640
	FF740	4, 6, 8, 10	95	170	25	86	740	680	800	0	24	6	8	710	655	1010	1670
355L	FF740	2,	75	140	20	67.5	740	680	800	0	24	6	8	710	655	1010	1640
	FF740	4, 6, 8, 10	95	170	25	86	740	680	800	0	24	6	8	710	655	1010	1670